


Clay

colours



 Clay
Wool White
(base material / undyed)
C01



 Clay
Sand Stone
C02



 Clay
Creamy Cappucino
C03



 Clay
Dawn Grey
C04



 Clay
Timeless Grey
C05



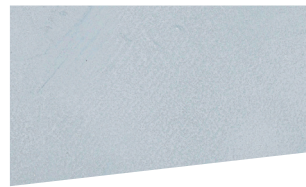
 Clay
Urban Grey
C06



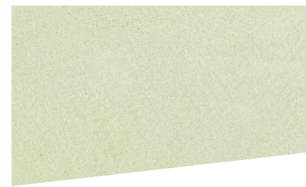
 Clay
Snow Blue
C07




 Clay
Dreamy Sky
C08



 Clay
Coastal Blue
C09



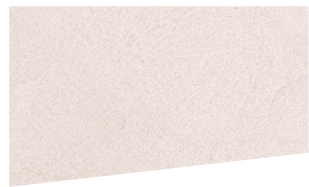
 Clay
Sicilian Pistachio
C10




 Clay
Gentle Green
C11



 Clay
Dark Moss
C12



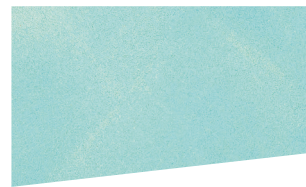
 Clay
Cherry Blossom
C13



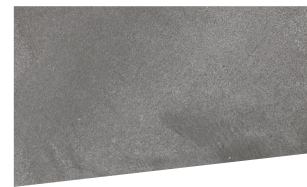
 Clay
Velvet Rose
C14



 Clay
Wild Mauve
C15



 Clay
Cool Glacier
C16



 Clay
Stone Grey
C17



 Clay
Earthy Violet
C18

Colour deviations are not excluded.
Farbabweichungen sind nicht ausgeschlossen.

The natural tone (C01) can also be individually
coloured with PANDOMO CC colour
concentrates.

Mit PANDOMO CC Farbkonzentraten lässt sich
der Naturton (C01) auch individuell einfärben.